

Bluetooth Mesh RGB+CCT LED Downlight

Model No.: LM070-LM072

12W RGB+CCT LED Downlight Model No.:LM072

Input Voltage: AC100~240V 50/60Hz

Power: 12W

Working Temp.: -20~60°C

CRI: >80 PF: >0.5

Color Temperature: 2700K~6500K

Luminous Flux: 1100LM

Light Efficiency: 88LM/W

Lifespan: 50000 hours

Beam Angle: 120°

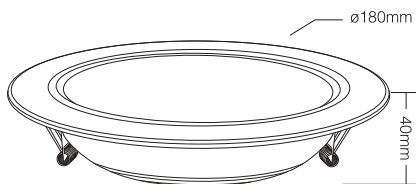
RF: 2.4GHz

Transmitting Power: 6dBm

Control Distance: 30m

Material: ALuminum+PC Cover

Product Weight: 320g



Hole Size: ø145~150mm

Features



RGB+CCT
16 Millions of colors to choose



Color temperature
2700~6500K



Dimmable
Saturation control



2.4G RF wireless transmission
technology



Signal transmitting &
Modes synchronization



Remote control
Control distance 30m



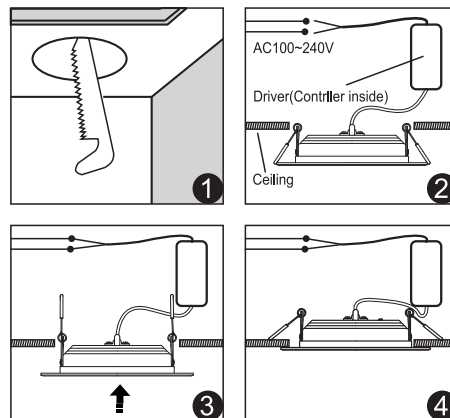
Smart phone APP control



Support third party voice control
(2.4GHz gateway is needed)

Instructions

1. Please open the hole on the ceiling according of Diagram 1. (For the size of the hole, please refer to the parameters of the corresponding model.)
2. Connect the driver properly according to the wire connection Diagram 2. And then put the driver and wire into the ceiling from the hole.
3. Push in the two spring elements, make sure that they are deployed and anchored on the back of the ceiling Diagram 3 and 4.



6W RGB+CCT LED Downlight

Model No.:LM070

Input Voltage: AC100~240V 50/60Hz

Power: 6W

Working Temp.: -20~60°C

CRI: >80 PF: >0.5

Color Temperature: 2700K~6500K

Luminous Flux: 600LM

Light Efficiency: 85LM/W

Lifespan: 50000 hours

Beam Angle: 120°

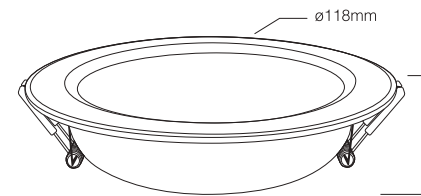
RF: 2.4GHz

Transmitting Power: 6dBm

Control Distance: 30m

Material: ALuminum+PC Cover

Product Weight: 160g



Hole Size: ø90~95mm

9W RGB+CCT LED Downlight

Model No.:LM071

Input Voltage: AC100~240V 50/60Hz

Power: 9W

Working Temp.: -20~60°C

CRI: >80 PF: >0.5

Color Temperature: 2700K~6500K

Luminous Flux: 720LM

Light Efficiency: 80LM/W

Lifespan: 50000 hours

Beam Angle: 120°

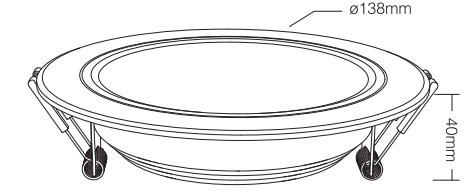
RF: 2.4GHz

Transmitting Power: 6dBm

Control Distance: 30m

Material: ALuminum+PC Cover

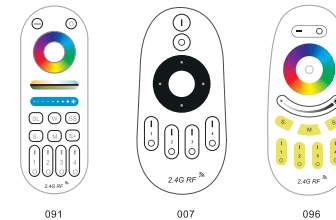
Product Weight: 200g



Hole Size: ø110~125mm

Link/Unlink

Compatible with these remote controls
(Purchased separately)



NOTE:
Lighting can be working after linking with remote;
for more details, pls read the remote instruction.

Dynamic Mode Sheet

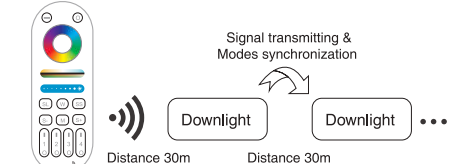
No.	Dynamic Mode	Brightness / Saturation / Speed	Auto-Sync
1	Riotous Profusion	Adjustable	Under same remote, same zone, same speed and dynamic mode, lights can be auto-sync
2	Blue Sky		
3	Gorgeous Color		
4	Ocean		
5	Dreamlike		
6	Christmas		
7	Forest		
8	Birthday		
9	Blooming		

Signal transmitting

One Downlight can transmit the signals from the remote control to another Downlight within 30m, as long as there is a Downlight within 30m, the remote control distance can be limitless.

Modes synchronization

Different Downlight can work synchronously when they are started at different times, controlled by the same remote, under same dynamic mode and within 30m distance.



Attention

1. When install the lighting fixtures, pls switch off the power to make sure the safety.
2. Please check whether the input voltage supply is in accordance with the lighting fixtures.
3. Non-professional user cannot dismantle the lighting fixtures directly, otherwise, it may cause fire and electric shock.
4. Please do not use lighting fixtures around the mental area and high magnetic field, otherwise, it will badly affect the control distance.

Made in China



Signal transmitting &
Modes synchronization

Bluetooth Mesh APP Control Instruction

1. Download and install [Tuya Smart] APP or [Smart Life] APP

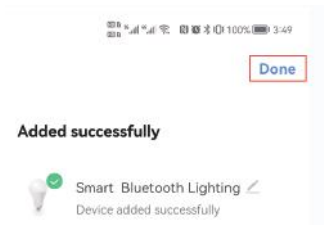
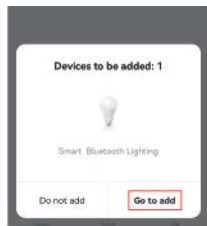
Search for [Smart Life] in Apple or Google store or scan following QR code to download and install the app.

Please click " Register " button to create account while using it in the first time, Log in directly if you already had account.



2. Connect to Smartphone

- (1). Set up Bluetooth function on your smartphone.
- (2). Power the downlight, when the downlight ON, Switch ON/OFF power 3 times, when the pink light blink, the light come into smart link mode.
- (3). Open the log-in Smart Life APP, it will auto find the device.

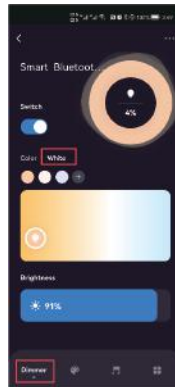


- (4). Added device will be displayed on the homepage after added successfully, then Click device you want to control to enter the control interface.



3. APP Control

- (1). When you come into control page, Click [dimmer] on the bottom left corner, then click [white], you can control the white light with color temperature, brightness, and save the white light you like.



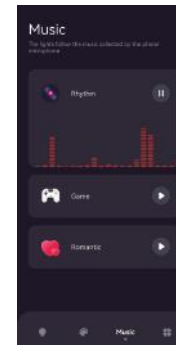
- (2). Click [Color], you can control color change, brightness, saturation and save colors you like.



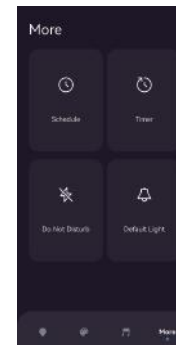
- (3). Click [] on the bottom, you can get into Scene control page.



- (5). Click [] , you can come into Music rhythm control page.



- (6). Click [] to come into More function including Schedule, Timer, Do Not Disturb and Default Light.



- Note:**
- To set up Timer function, you need to link Bluetooth Mesh Gateway.
 - Do not disturb function, pls read below pics carefully.

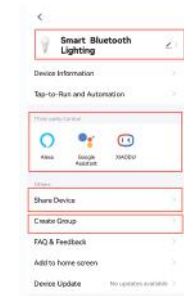


5. Device name editing, Third-party Control, Device Sharing and Group Control.

- (1). Click [] on the top right corner of control page to come into extra function.
- (2). Click icon under third-party control to view detailed description of third-party control (need Bluetooth Mesh Gateway)
- (3). Click [Share Device] to share the device to family and friends. (need Bluetooth Mesh gateway).

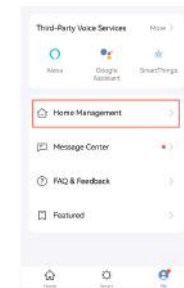
Note: to share device, you need to create a home first, then add members in to this home. Please read 6th instructions for how to make home management.

- (4). Click " Create Group " and follow APP prompt after setting is completed, the devices can be controlled by group.

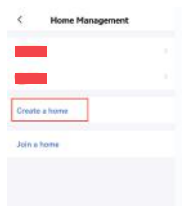


6. How to make Home Management for Device Sharing.

- (1). Click [] on the home page control interface, then click [Home Management] to enter Home management making.



- (2). Click [Create a home] to complete home management, then you can add members on the home, and share device to your home number.



Note: Bluetooth Gateway connection, please read the manual instruction after you buy the bluetooth gateway.