

尺寸: 140*100mm

Manual Instruction

AC Triac Dimmer(2.4G+Push)

Model No.: TR01RF

1. Product feature

- Support 2.4G RF Remote control.
- Connect PUSH Dimmer switch,support ON/OFF and continuous dimming function.
- 0~100% dimming smoothly, flicker-free.
- Adopt back edge phase dimming.
- Set the lowest brightness by key.
- Temperature detecting switch,with overheat protection and automatic recover function.
- Overloading protection,automatic power limit.
- Signal Auto-Transmitting and mode auto-synchronization function.
- Can be installed in a standard 86*86 wall junction box.
- Support Smartphone App control(need 2.4GHz Gateway).
- V0 class anti-fire case.

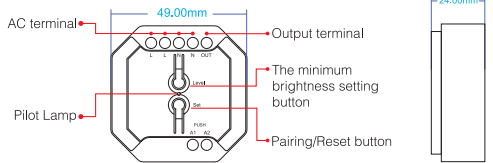
2. Technical Specification

Input voltage: AC 100V ~240V 50/60Hz
Output voltage: AC 100V ~240V 50/60Hz
Output current: Max 1.4A
Max Output Power: 154W@110V 308W@220V
Working Temperature: Ta: -20°C~40°C
Control Distance: 30m(Open and barrier-free)
Product Size: 49*49*24mm(Length*width*height)

2.1 Supported Loading type

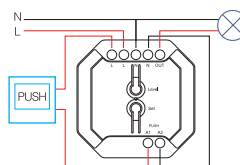
Loading type	Max Output Power	Note
Dimmable LED light	100W@110V 200W@220V	Due to the variety of designs for LED lights and dimmable LED drivers, the maximum power when connected to a dimmer depends on the power factor. Additionally, the installation environment and heat dissipation conditions can also affect the maximum power. If overheating occurs, please reduce the power usage.
Triac Dimming LED Power Supply	150W@110V 300W@220V	
resistive load, incandescent bulbs and high-voltage halogen lamps.	154W@110V 308W@220V	

3. Product Structure

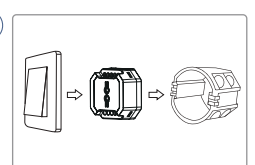


4. Wiring and Installation Diagram

4.1 Wiring diagram:



4.2 Typical Wall junction Box Mounting



Notes: Before powering on device,ensure that all wires connection are correct. Otherwise the product will be damaged.

5. Product Function

5.1 Function of the key

Function	Operation unit	Operation instruction
Enter Linking status	"SET"	Short press "SET" once,when the pilot lamp blink, enter pairing mode
Restore factory defaults and clear all linked remote controller	"SET"	Long press the "SET" for over 3 seconds, the pilot lamp blinks slowly,restore factory defaults
The minimum brightness setting	"Level"	Short press the "Level" when pilot lamp blinks quickly,switches different minimum brightness circularly.

5.2 Enter Linking status:

Any of the following 3 methods can make the device enter linking mode:

- Power off the controlled dimmer for 10s and then power on again. The dimmer enter linking mode
- Press the "PUSH" switch, continuously press the PUSH switch for four times or more within 5 seconds,the device enter linking mode.
- Short press the "SET" once, the device enter linking mode.

Note: The linking mode just can be kept in 5 seconds,after 5 seconds,please above steps.

5.3 When the device is on linking mode,use the remote control to link or unlink.

Link: Short press Zone "ON" for 3 times within 5s
Unlink: Short press Zone "ON" for 5 times within 5s

5.4 PUSH Dimmer dimming function:

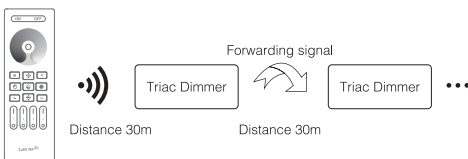
- Short press PUSH Dimmer: Turn on or Turn off the light.
- Long press PUSH switch:Dim the brightness smoothly, Long press Push Dimmer, then loosen the Push Dimmer, then long press again,switch increase brightness or decrease brightness.

5.5 Minimum brightness setting

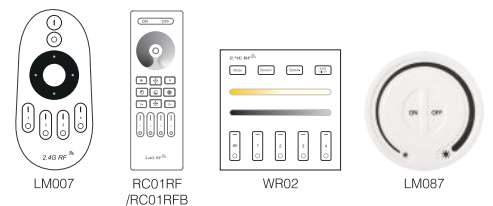
- The default minimum brightness is 25%. To adjust it, press the "LEVEL" button once. The light will flash rapidly, and the brightness will increase to 30%. Continue pressing the button to cycle through these levels: 35%, 5%, 10%, 15%, 20%, and back to 25%. Once you've selected your desired level, stop pressing the button. Wait for the light to stop flashing to save the setting. The light will then return to its previous brightness.
- Long press "Level" button until the pilot lamp blink. The minimum brightness restore to default setting.

6. Signal Auto-transmitting instruction

The dimmer can forward the received remote control signal to another dimmer within 30m, as long as there is a dimmer per 30m, the control distance can be unlimited.



7. Compatible remote control (purchase separately)



8. Malfunction analysis and elimination

Malfunction	Reason	Solution
the light isn't working	No power or wrong wiring	Check the power supply and wiring
When the light is adjusted to the highest brightness, it will automatically dim	When the loading current exceeds the dimmer maximum loading, the dimmer automatically limits the output current	Reduce the loading power
During operation, the light is automatically turned off and automatically restored after a period of time.	Dimmer overheat protection	Reduce the loading power

8. Attention

- When installing the device,please switch off the power to ensure safety.
- The product can not be installed to the area near flammable and explosive materials.
- Please check whether the input voltage is consistent with the device.
- Non-professional users should not disassemble the equipment directly, otherwise it may cause electric shock or damage the equipment.
- Do not use the device in the vicinity of a large metal area or strong electromagnetic waves, otherwise the remote control distance will be seriously affected.

