

尺寸: 240*100mm

Manual Instruction

Smart Wall Remote Controller

Model No.:WR01RF&WR02RF

1.Features

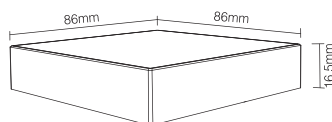
We adopt a high precision capacitive touch screen IC. Touch screen is very Stable and Sensitive, 2.4GHz high RF wireless control with long distance controlling, low power consumption and high speed transmitting rate. This wall remote widely work on our smart LED Lighting, LED controllers, etc.

2.Parameters

Working Voltage: 3V(2*AAA Battery)
Standby Power Consumption: 20uA
Transmitting Power: 6dBm
Transmission Frequency: 2.4GHz
Working Temp.: -20~40°C
Control Distance: 30m
Size: 86*86*16.5mm

WR01RF Works With:
WB5,LM051,LM052,LM053,C03W,
C03RF,C04W,C04RF,C05W,
C05RF etc controller.

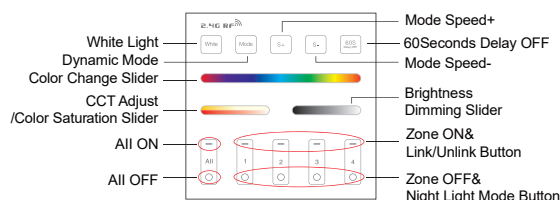
WR02RF Works With:
WB5,LM051,LM052,LM053,C01W,
C01RF,C02W,C02RF etc controller.



3.Keys Function

Remark:When touching the button, LED pilot lamp will flash once with different sound.(Touching slider with no sound).

WR01RF: 4-Zone RGB&RGBW&RGB CCT White Wall Remote



Touch color slider, choose the color you want.

Control RGB CCT LED ,Press W button first and adjust color Temperature.

Control RGBW LED ,it doesn't work on color temperature adjustment.

Control RGB LED ,Press W button first and adjust color Temperature.

Note: The color temperature value is not very accurate,because it is RGB color mixing to adjust the color temperature.
Under color light mode, change color saturation.

Touch dimming slider to change the brightness from.

ALL ON:Touch to turn on all linked lights.
Long press over 5 seconds to turn ON the pilot sound
Zone(1-4)ON:Touch zone ON, turn on zone-linked lights.

ALL OFF:Touch to turn off all linked lights.
Long press 5 seconds to turn OFF the pilot sound.
Zone(1-4)OFF:Touch zone OFF, turn off zone-linked lights.
Long press Zone(1-4)OFF to get the night light mode.

White Touch white button to white light mode.

Mode Switching dynamic modes.

S+ Accelerate the speed on current dynamic mode.
When the light is not on dynamic modes, long press this button to set up "Do not Disturb"function(Mainly for C01RF-C05RF controllers).

S- Slow the speed on current dynamic mode.
When the light is not on dynamic modes, long press this button to delete "Do not Disturb"function(Mainly for C01RF-C05RF controllers).

60S Delay OFF When the light is ON, press "60S Delay OFF", the light will be OFF automatically after 60 seconds.

Note: When set up "60S Delay OFF" function, the other buttons not working during the 60 seconds; uses can press "60S Delay OFF" button to delete this function, then other buttons can works again.

WR02RF: 4-Zone DIM&Dual White Wall Remote(Brightness Dimming and CCT Adjust).



Touch the slider to adjust color temperature.
Note: when you control single color lights, the slider not working.

Touch dimming slider to change the brightness.

ALL ON:Touch to turn on all linked lights.
Long press over 5 seconds to turn ON the pilot sound.(The pilot sound is opened by default).
Zone(1-4)ON: Touch zone ON, turn on zone-linked lights.

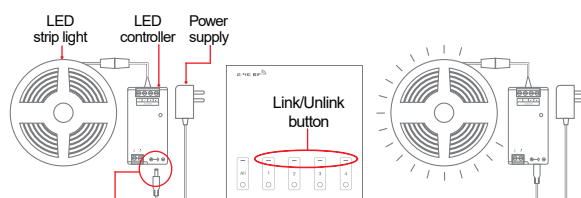
ALL OFF: Touch to turn off all linked lights.
Long press 5 seconds to turn OFF the pilot sound.
Zone(1-4)OFF: Touch zone OFF, turn on zone-linked lights.
Long press Zone(1-4) OFF to get the night light mode.

Mode Switching dynamic modes.

Speed+ Accelerate the speed on current dynamic mode.
When the light is not on dynamic modes, long press this button to set up "Do not Disturb"function(Mainly for C01RF-C05RF controllers).

Speed- Slow the speed on current dynamic mode.
When the light is not on dynamic modes, long press this button to delete "Do not Disturb"function(Mainly for C01RF-C05RF controllers).

60S Delay OFF When the light is ON, press "60S Delay OFF", the light will be OFF automatically after 60 seconds.
Note: When set up "60S Delay OFF" function, the other buttons not working during the 60 seconds; uses can press "60S Delay OFF" button to delete this function, then other buttons can works again.

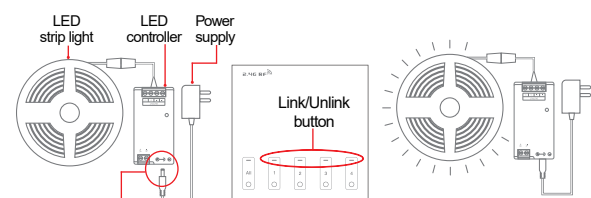


1 Disconnect the LED controller from the power supply for 10 seconds and then reconnect it

2 When the light on, short press any zone of "Link/Unlink button" 3 times within 3 seconds.

3 The LED strip blinks 3 times slowly means the linking is successfully

If the light not blink slowly, the linking failed, pls switch off the light again, and follow the above steps again.
When the LED strip is on,please expand it, don't roll up



1 Disconnect the LED controller from the power supply for 10 seconds and then reconnect it

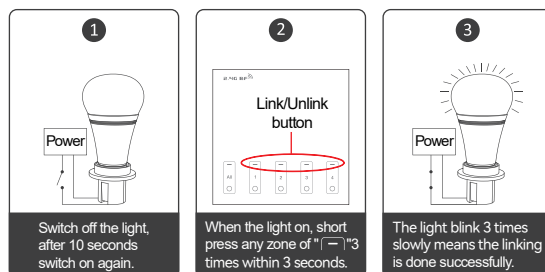
2 When the light on, short press any zone of "Link/Unlink button" 5 times within 3 seconds.

3 The LED strip blinks 10 times quickly means the unlinking is successfully

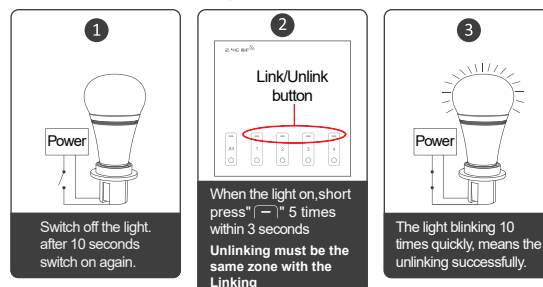
If the light not blink quickly, the unlink failed, pls switch off the light again, and follow the above steps to unlink again.

4. Link/Unlink (WR01RF&WR02RF)

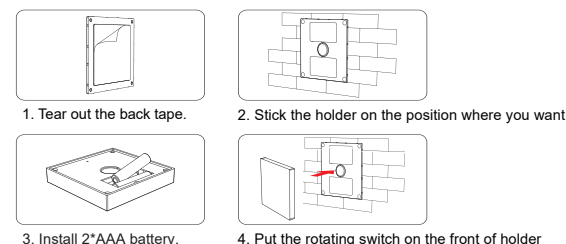
4.1 Linking Instructions



4.2 Unlinking Instructions



5.Installation



6.Attention

Please do not use lighting fixtures around the mental area and high magnetic field, otherwise, it will badly affect the control distance.